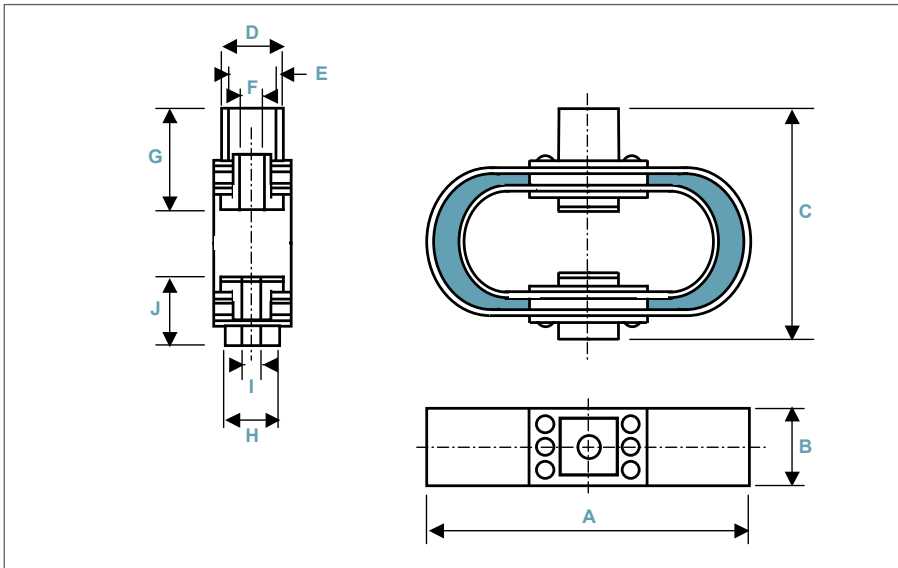


# LEAF SPRING ELASTOMER MOUNTS: **LSY**

DEFINITION  
**series LSY**



- Multidirectional anti-vibration/ shock mounts.
- Structure-born noise isolation.
- Displacement under shock up to 60mm along vertical direction and 40mm along radial.
- Transmissibility :  $2 < Q < 6$ .
- Transmitted acceleration limited to 5g along longitudinal direction and to 15g along vertical and transversal.
- Temperature range:  $-20^{\circ}\text{C} +40^{\circ}\text{C}$ .

Dimensions are in mm. For reference only.

| SERIE   |
|---|
| Materials and finishes<br>(meets RoHS requirements) |
| <b>LSY</b>  |
| <b>Leaf and washer:</b><br>stainless steel          |
| <b>Compound:</b><br>epoxy resin                     |
| <b>Bush:</b><br>nylon and elastomer                 |
| Coating : Neoprene Paint                            |

| LOADS & DIMENSIONS |                  |     |     |     |     |     |     |    |     |    |    |         |      |           |
|--------------------|------------------|-----|-----|-----|-----|-----|-----|----|-----|----|----|---------|------|-----------|
| type               | static load (kg) |     |     | A   | B   | C   | D   | E  | F   | G  | H  | I       | J    | mass (kg) |
|                    | min              | nom | max |     |     |     |     |    |     |    |    |         |      |           |
| -10                | 9                | 10  | 18  | 203 | 51  | 134 | 40  | 29 | M6  | 39 | 32 | 9(M8)   | 22   | 0,68      |
| -20                | 18               | 20  | 35  | 203 | 51  | 134 | 40  | 29 | M6  | 42 | 32 | 9(M8)   | 23   | 0,80      |
| -45                | 35               | 45  | 55  | 216 | 51  | 166 | 50  | 36 | M10 | 56 | 32 | 13(M12) | 23,5 | 1,02      |
| -70                | 55               | 70  | 90  | 216 | 51  | 166 | 50  | 36 | M10 | 57 | 32 | 13(M12) | 25   | 1,13      |
| -110               | 90               | 110 | 135 | 216 | 51  | 166 | 50  | 36 | M10 | 58 | 32 | 3(M12)  | 26   | 1,25      |
| -180               | 135              | 180 | 250 | 297 | 102 | 229 | 101 | 63 | M16 | 77 | 64 | 21(M20) | 39   | 5,90      |
| -320               | 250              | 320 | 380 | 297 | 102 | 229 | 101 | 63 | M16 | 79 | 64 | 21(M20) | 41   | 6,57      |
| -450               | 380              | 450 | 550 | 297 | 102 | 229 | 101 | 63 | M16 | 80 | 64 | 21(M20) | 43   | 7,25      |

EXAMPLE  
LSY-45



**PREFIX:**  
'leaf spring' mount  
from the  
LSY series

**MODEL: -45**  
nominal static load: 45kg  
height: 166mm  
length: 216mm  
width: 51mm  
mass: 1,02kg

